

Sanitary Process Connection — Tri-Clamp Type

APPLICATIONS

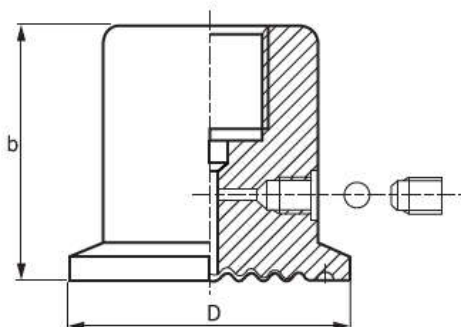
Diaphragm pressure gauges are used when medium is high viscous, crystallizing or with particles. DS500 series is particularly used in food, beverage, biochemical and pharmaceutical industry. The features are easy to open, cleaning without residues and quickly measuring point.



SPECIFICATIONS

Instruments	111 series pressure gauges and pressure transmitters are available
Process connection Tri-Clamp	Diaphragm housing material: SS304 ; SS316 ; SS316L Tri-clamp — 1½" ; 2" ; 2½"
Diaphragm	SS316L
Temperature limited	Standard -20℃ to +80℃ ; Option -40℃ to +200℃
Filling Fluid	Glycerin for -20℃ to +80℃ ; Silicon oil for -40℃ to +200℃
Pressure ranges (for pressure gauge)	Tri-clamp 1½" — 0/6 ~ 0/40 kg/cm ² (bar) Tri-clamp 2" — 0/1 ~ 0/40 kg/cm ² (bar) Tri-clamp 2½" — 0/1 ~ 0/16 kg/cm ² (bar)
Accessory assembly (option)	Clamp ring (ferrule) + welding socket < whole set type > Capillary for remote measuring (specify length of capillary when ordering)

DIMENSION



ISO	b	D
1½"	37mm	45mm
2"	45mm	64mm
2½"	45mm	77.5mm

DIN	b	D
DN25	37mm	50.5mm
DN32	37mm	50.5mm
DN40	37mm	50.5mm
DN50	45mm	64mm

HOW TO ORDER

Model No. of pressure gauge

